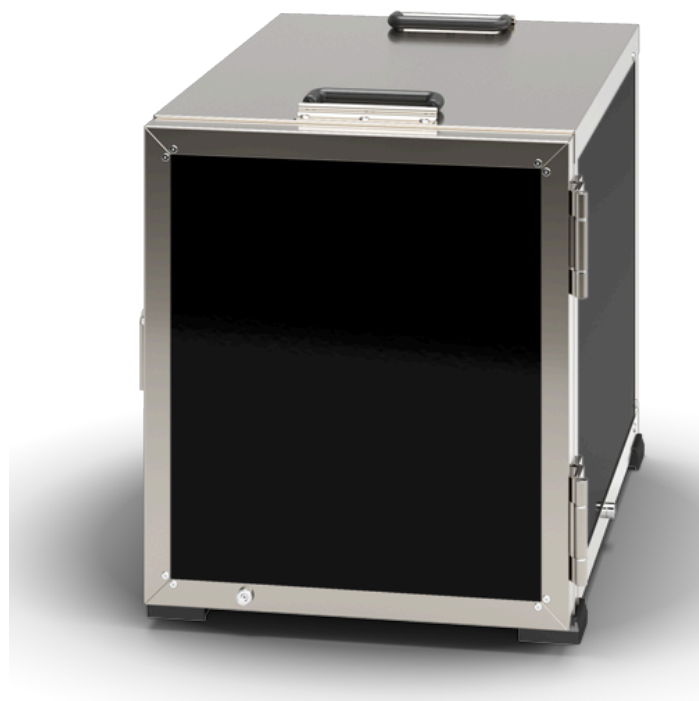


Stackable Box Single

Neutral



Product description

Stackable box is made to hold and transport hot or cold food easily and safely. The box is designed with ScanBox ExP construction that combines optimized insulation performance with high operational reliability and environmentally conscious choices.

The box can be pre-cooled in refrigerated rooms. Extend chilled storage time by easily retrofitting runners for eutectic plate for further temperature

retention. ScanBox Portable Line has capacity for 4 containers in the GN 1/1 standard.

Equipped with excenter lock, solid door, removable U-guide rails with 80 mm spacing, black RAL 9005, as standard. The equipment can be easily adapted as required through the available extra options.

Do you want to know more?

Contact us at info@scanbox.se
or +46 (0)454-30 83 00

ScanBox
Bringing your food with care

Technical specification

MODEL SERIE: Stackable Box Single - Neutral



Product models	SBSNE04
Capacity	
Tray system	GN 1/1
Distance between racks (mm)	80
Number of 65mm trays	4
Maximum load weight per rack (kg)	9
Distance to the first rack (mm)	65
Physical Attributes	
Inside depth (mm)	567 mm
Inside width (mm)	352 mm
Inside height (mm)	407 mm
Outside depth (mm)	649 mm
Outside width (mm)	459 mm
Outside height (mm)	513 mm
Volume (l)	81 l
Net weight (kg)	18 kg

Equipment & Accessories

MODEL SERIE: Stackable Box Single - Neutral



Exterior

Default	Black (RAL 9005)
303010-2	Signature Logo
302030-1	Grey (RAL 7042)
950001	Signature Cover
302020-1	Red (RAL 3003)

Door

Default	Solid
---------	-------

Door Handle

Default	Excenter Lock
351008-2	One Grip Handle with Lock
301054-1	One Grip Handle

Accessories

www.scanbox.se

Visiting adress ScanBox AB, Ekångsvägen 1. SE-293 40 Olofström, Sweden
Post adress ScanBox AB, P.O. Box 13. SE-293 21 Olofström, Sweden
Telephone +46 (0) 454 30 83 00 | Fax +46 (0) 454 30 83 30
Email info@scanbox.se | VAT SE556446828701

ScanBox
Bringing your food with care